

Sunny Boy 1100U



The leading grid-tied photovoltaic inverters in Europe and America



UL 1741 Listed for grid interactive inverters

5-year comprehensive warranty standard

Rugged NEMA 4X stainless steel enclosure standard

Exceptional reliability and energy capture ratio

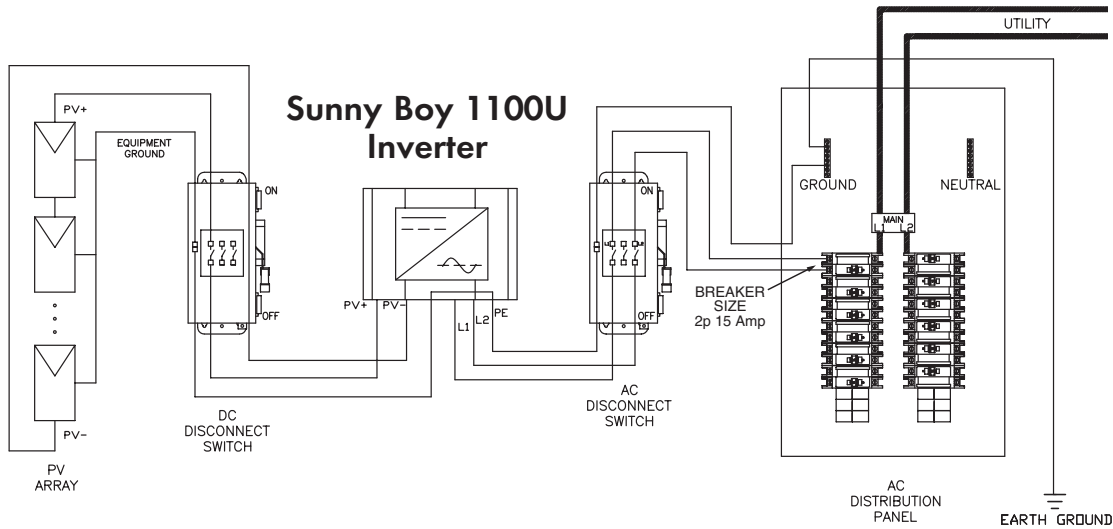
Easy to install three-point mounting system

Comprehensive communications and data collection options

SMA's modular string inverter design is expandable to virtually any size system

The SMA Sunny Boy inverter, the most popular grid-tied photovoltaic inverter in Europe, is now UL 1741 Listed and available in North America. Sunny Boy's extensive track record in some of the world's most demanding markets has made it a favorite among PV professionals everywhere. Over 250,000 Sunny Boy inverters have been installed worldwide. Superior design, rock-solid German engineering and exceptional real-world efficiency have made Sunny Boy the top choice for American solar designers.





Sunny Boy's unsurpassed reliability and efficiency are the result of SMA's manufacturing philosophy that combines simple design with robust execution. SMA's state-of-the-art maximum power point tracking performance results in greater real-world energy capture than any other grid-tied inverter. Sunny Boy's safety and reliability record is also exceptional due, in part, to the inverter's redundant grid monitoring and built-in ground fault detection and interruption protection. The inverter's IGBT power stage generates a nearly perfect sine wave with the lowest harmonic distortion in the industry and meets ultra-strict FCC EMC standards. SMA's unique String Inverter technology makes future system expansion simple. SMA advanced communication options are available to satisfy almost any application.

Specifications

Inverter Technology	Real sine-wave, current source, high frequency PWM	Enclosure	NEMA 4X (IP65) Stainless Steel
AC Input Voltage	213 - 262 (240V AC)	Dimensions	12.68W x 12.60H x 7.09D in 322W x 320H x 180D mm
AC Input Frequency	59.3 - 60.5 (60Hz) 50 Hz also available	Weight	56.26 lbs (21 kg)
DC Input Voltage	129 - 400V DC	Compliance	UL 1741, E210376, UL 1998, IEEE 519, IEEE 929, ANSI C62.41 C1 & C3, FCC part 15 A & B
Peak Power Tracking Voltage	145 - 400 (240V AC)	* Optional external fan (Sunny Breeze) available	
Minimum DC Input Voltage	129V DC	SMA America, Inc	12438-C Loma Rica Dr.
Maximum DC Input Voltage	400V DC	Grass Valley, CA. 95945	Tel: 530.273.4895
Maximum Array Input Power	1440W (DC@STC)		Fax: 530.274.7271
Maximum AC Power Output	1100W (240V AC)		www.sma-america.com
Current THD	< 4%		
Power Factor	Unity		
Peak Inverter Efficiency	93.0%		
Cooling	Convection cooling (no fan)*		
PV Start Voltage	180V DC		
Maximum AC Output Current	5.2A		
Maximum DC Input Current	10A		
DC Voltage Ripple	< 5%		
Power Consumption	0.1W nighttime, < 4W standby		
Ambient Temperature Rating	45°C		

Distributed by:

Solar Today...
Energy Tomorrow

